



Backhoe Quick Connect & Backhoe Root Ripper—B Series



Backhoe Quick Connect

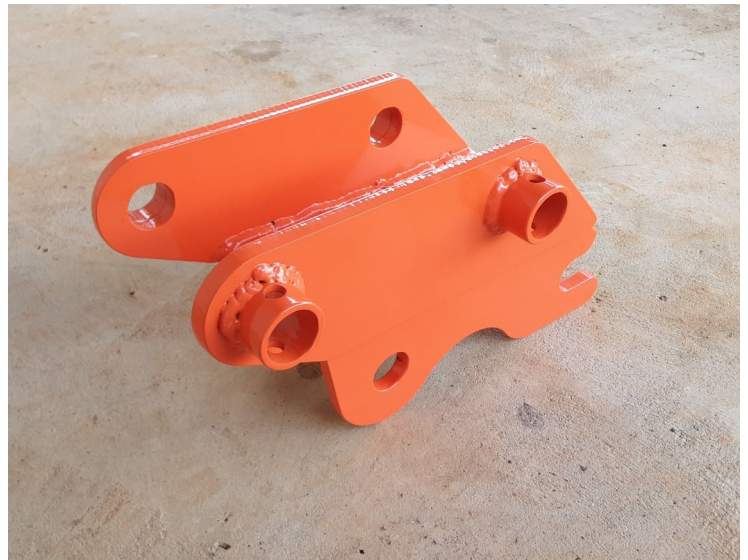
Connects to BH65, BH70, BH75, BH76, BH77, BT650, BT750 & BT751 Backhoes

20 seconds changeover between implements.

Uses the standard factory pins. Works with and without the factory thumb.

Made of 350 grade steel.

Powder coated in Kubota Orange Colour.



Backhoe Root Ripper

Designed to work with and suits the Kubota BH65, BH70, BH75, BH76, BH77, BT650, BT750 & BT751 Backhoes. Connects to Quick Connect

Inside sawing teeth allow an aggressive cutting and ripping action. Hook on the back side aids in stump removal.

Uses standard Kubota Pins for connection to the backhoe.

Works with and without the factory thumb.
Made from 350 grade steel and is 16mm thick.
Uses standard Kubota pins or CAT2 Top link pins.
Painted black.

